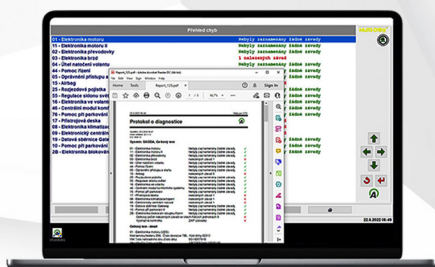




# DIAG4PTI

**OBD & OBFCEM diagnostic equipment and reader for checking vehicle electronic systems for PTI (Periodical Inspection Stations)**

**The device complies with the requirements of Directive of the European Parliament and of the Council 2014/45/EU**



- ✓ At the heart of this is the **DIAG4PTI** program, which uses a regularly updated communication database that has been in use for many years and eliminates the ever-appearing communication anomalies of even new vehicles. The program can be installed on any number of PCs.
- ✓ For communication with the vehicle, the **DIAG4PTI** communication interface is used, which is a clone of the ATAL communication interfaces that have been successfully used for many years in the PTIs of many European countries. The **DIAG4PTI** communication interface is licensed to the user.
- ✓ The **DIAG4PTI** communication interface uses ATAL's professional wireless network ATAL BlueNET with an operating distance of up to 200 m in open space.
- ✓ The prescribed annual calibration of the equipment is offered by the ATAL manufacturer at the point of use or by remote calibration using the calibration tester supplied with the equipment
- ✓ The device is ready to meet the upcoming requirements for new functions for test equipment using the vehicle's electronic interface according to Annex 1 of the EP Directive 2014/45/EU for inspections: ABS, EBS, EPS, headlight inclination corrector, seat belt pretensioner, Airbags, odometer status, ESC, etc.
- ✓ The annual license includes on-line manufacturer support and a guarantee of updates to the communication database.
- ✓ The PTI technician can use the supplied tester to verify the full functionality of the device at any time and very quickly and easily.

The set includes:

- Standalone PC application **DIAG4PTI**
- **DIAG4PTI** communication interface
- Calibration testers



verze 1.2